

ELCA WORLD HUNGER'S

GLOBAL FARM

Challenge



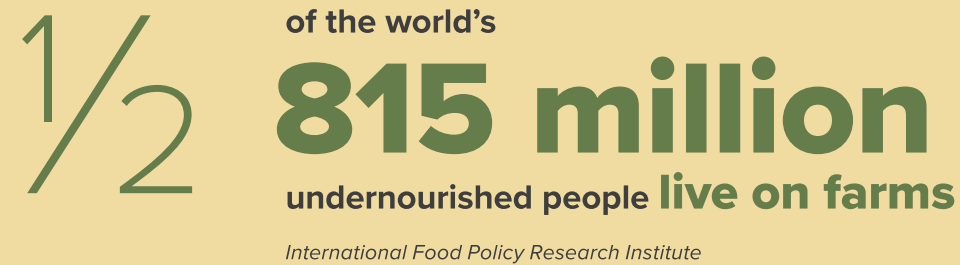
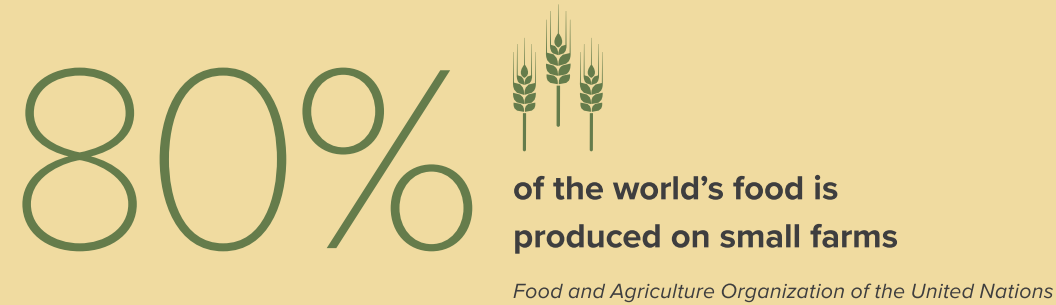
[ELCA.org/globalfarmchallenge](https://elca.org/globalfarmchallenge)



ELCA World Hunger
Evangelical Lutheran Church in America
God's work. Our hands.

WHY FARMS?

Almost 80 percent of all the world's food is produced on small farms where parents and children often work side by side. Growing food is just one of the many ways farmers care for God's creation and help share God's gifts with others so that all are fed. Yet half of the world's 815 million undernourished people live on farms themselves. Without access to adequate resources and training, farming families can often go hungry. And when the unexpected happens – drought, flooding, conflict and beyond – fewer farmers can make it through.



THINK ABOUT IT!

4/5

of the world's food is produced on small farms that rely mainly on family labor.

Food and Agricultural Organization of the United Nations



Climate change, conflict and a lack of resources can make even potentially profitable farms unsustainable.



41.2 million Americans were living in food-insecure households in 2016.

U.S. Department of Agriculture



ELCA WORLD HUNGER'S

GLOBAL FARM

Challenge

Family farms are a way of life – key sources of food and income – for much of the world, including the United States.

Yet for many of these farming families, limited resources can mean they struggle to feed themselves. Droughts, floods, poverty and violence can quickly turn a hopeful season into a hungry season, driving many farmers to find work elsewhere – even in countries far from their homes.



WHAT IS THE HUNGER SEASON?



The hunger season is an annual time when farmers' stockpiles of food and money tend to run out, and food insecurity can skyrocket. Food insecurity happens when people are uncertain of having enough food to meet the needs of all family members.

THE OPPORTUNITY!

That's where you come in. The goal of ELCA World Hunger's Global Farm Challenge is to raise \$500,000 or more in 2018 to equip communities around the world and in the United States with livestock, seeds, tools, training and other agriculture-related activities to turn a hungry season into a hopeful season.

And now, thanks to generous friends of the ELCA, all gifts toward the Global Farm Challenge will be matched – dollar for dollar – up to \$515,000, so together we can raise more than \$1 million to create healthier families, stronger economies and a future filled with hope.

WHAT IS ELCA WORLD HUNGER'S GLOBAL FARM CHALLENGE?

The Global Farm Challenge is a yearlong, youth-driven fundraising challenge to support the agriculture-related programs of ELCA World Hunger, our church's ministry to end hunger and poverty. Many youth and youth groups will raise funds in advance of the 2018 ELCA Youth Gathering in June, and many will bring their offerings to the Gathering. At the Interactive Learning Space in the NRG Center, youth and young adult leaders will have the chance to participate in an unforgettable experience designed to immerse them in what it's like to be a smallholder farmer around the world.



Not going to the ELCA Youth Gathering?

No problem! You can still make a difference as part of this historic challenge. See the back cover for details.

"I was trained and given an improved variety of drought-resistant teff (a crop similar to wheat). My life and my family's life has really improved. I have built a new house and been able to buy some sheep and cows."

– Shamble, Ethiopia

FUNDRAISING IDEAS

Featured Fundraiser!

Fund a family farm

Talk about transformation! A cow, a couple of goats, a dozen chicks, two pigs, farming tools, seeds, and agricultural training and support, for example, can help a family achieve a fresh start. Challenge your group to raise \$715 to provide a family with new tools and support, so crops can grow stronger than ever. Eggs, milk and meat from the farm animals can be a life-changing source of food – to eat and sell on the market – helping a family escape the cycle of hunger and poverty – for good.

Pass the pig

Raise awareness about world hunger by creating a game of “pass the pig.” Create and decorate a large cutout pig and place it around town at members’ homes or local businesses, and leave it there until a donation is made. Your group can also ask for early donations as “insurance” against getting passed the pig.

Noisy offering

Ask worship attendees to fill watering cans, wheelbarrows or jars with change for two, three or four consecutive Sundays. Pass the containers at youth group, confirmation, congregation council and other meetings.

Build a barn

Use a toy farm set to create a farm scene near your congregation’s sanctuary or in the narthex. As you raise enough money to buy different animals, add the animals to your farm scene. You can also use paper or cloth cutouts to make the scene on your congregation’s bulletin board.

SET A GOAL

Working with global companion churches and trusted partners around the world, ELCA World Hunger spends more than \$7 million per year on sustainable development-related projects.



\$30

could provide a piglet, which can quickly grow to 200 pounds or more. And when this not-so-little piggy goes to the market, it’s worth a pretty penny. Should a family have a failed harvest, medical expense or other unexpected need, this gift can be cashed in to make all the difference.



\$100

could give a family a pair of goats, whose milk can provide daily nutrition for children and their families. Goats can go where other animals can’t, surviving in some of the world’s harshest environments. And what’s more, offspring can rapidly transform a community when shared with other families in need.



\$200

can start a community vegetable garden. Start with a shared plot of land and good soil, add drought-resistant seeds and top it off with tools and training. The result? Plenty of tomatoes, potatoes, cabbage, beans, cassava and other vegetables to go around.



\$500

can provide a cow, which can produce as many as 3 gallons per day of nutritious, calcium-packed milk for families to drink. Milk can also be used to make cheese, yogurt, butter and other dairy products to eat and sell for a steady source of income.



\$715

could help a family farm get a fresh start – a cow, a couple of goats, a dozen chicks, two pigs, farming tools, seeds, and agricultural training and support.

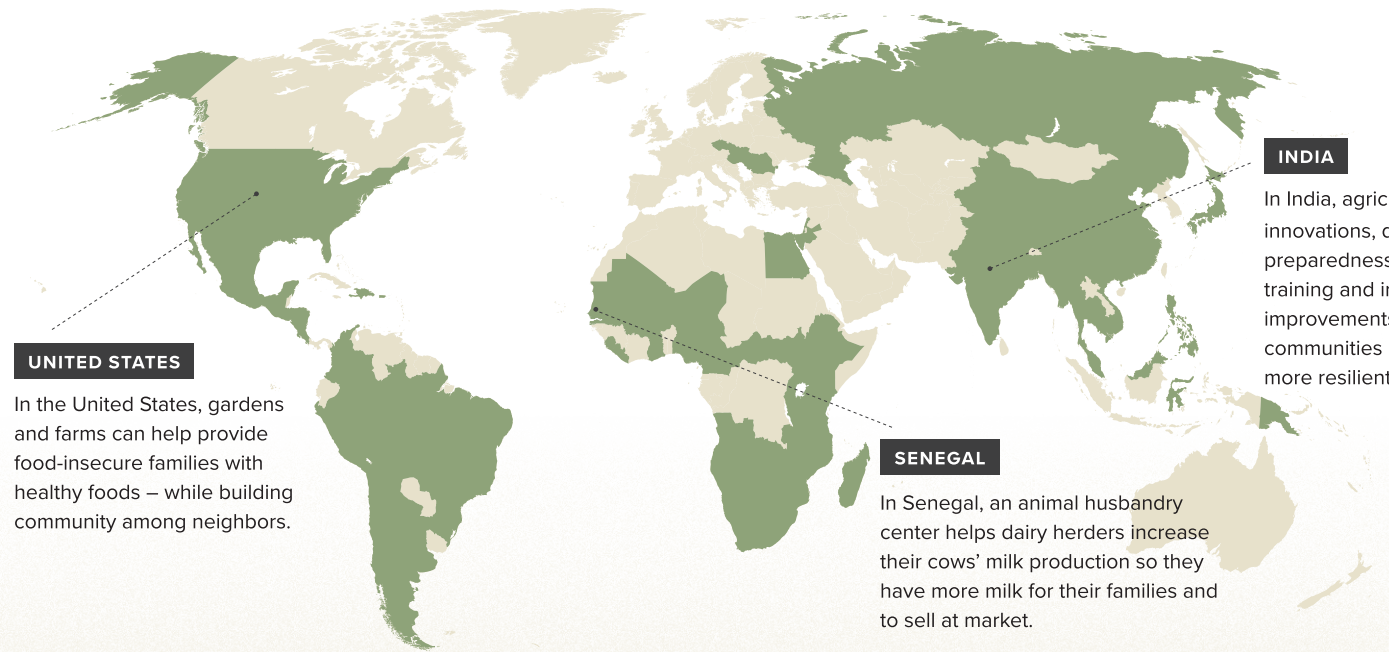


\$1,000

provides a pair of oxen and a plow, a transformational way to share God’s abundance with those in need, with the possibility of doubling or tripling a farmer’s annual harvest.

WHERE WILL MY MONEY GO?

The highlighted countries on the map show where gifts to ELCA World Hunger were at work in 2017.



UNITED STATES

In the United States, gardens and farms can help provide food-insecure families with healthy foods – while building community among neighbors.

SENEGAL

In Senegal, an animal husbandry center helps dairy herders increase their cows’ milk production so they have more milk for their families and to sell at market.

INDIA

In India, agricultural innovations, disaster preparedness training and irrigation improvements help communities become more resilient.



Your gifts to ELCA World Hunger support projects in **more than 60 countries** around the world, including the United States.

Many of these projects help provide livestock, tools and training for farm families.



The projects listed on the previous page are examples of work being done in programs supported by funds from ELCA World Hunger. Because we seek to honor your generosity and keep administrative costs low, the ELCA does not track individual gifts to specific families or locations in the United States or abroad. These gifts will support sustainable development-related projects where needed most, so your donation has the biggest impact.



What do I do with my offering?

Each congregation attending the 2018 ELCA Youth Gathering in June will bring their offering (individual or collective cash or checks) to Houston – look for ELCA World Hunger’s Global Farm Challenge in the Interactive Learning Space at the NRG Center in Houston.

Not attending the ELCA Youth Gathering?

No problem! You can still be part of this historic challenge. Create your own fundraising event in your congregation, and send your checks to:

ELCA
P.O. Box 1809
Merrifield, VA 22116-8009

Please make your checks payable to “ELCA World Hunger” and include “Global Farm Challenge” on the memo line so it can be included in the national total. To tell us more about your gift, use the order form at ELCA.org/globalfarmchallenge.

You may also give online at ELCA.org/globalfarmchallenge.

RESOURCES

Visit ELCA.org/globalfarmchallenge to find these resources and more!



Global Farm Challenge video

This two-minute video provides an overview of the Global Farm Challenge and an invitation to join. It’s a good way to preview the challenge with your group and your congregation.



Global Farm Challenge bulletin insert

Order copies of this bulletin insert to share information about the Global Farm Challenge with your youth group and congregation.



Piggy banks, stickers and more

Order piggy banks to collect offerings, stickers to share with Sunday school kids and more resources to spread the word in your congregation.

ELCAMA1361



ELCA World Hunger
Evangelical Lutheran Church in America
God's work. Our hands.